

# FIVE TREASURES

SCHAFBERGBAHN  
WOLFGANGSEESCHIFFFAHRT  
FESTUNGSBAHN  
MÖNCHSBERGAUFZUG  
WASSERSPIEGEL



# PURE

UNIQUE  
MOMENTS OF  
ENJOYMENT IN  
THE SALZ-  
KAMMERGUT



# ENJOY MENT



 info@5schaetze.at  
Tel: +43 662 / 8884 - 9700

5treasures.com





NEW

THE NEW EXPERIENCE QUARTER AT  
THE SCHAFBERGBAHN:  
A VERY UNIQUE EVENT LOCATION

PERSPEC  
TIVES

# EXPERI ENCE



© Albrecht Manuel Schmädel

## EXPERIENCE- QUARTER GROUND FLOOR

FOR UP TO 300 GUESTS

The event space on the ground floor of the EQ provides ample room for all your ideas. Bring your perfect event to life on an area of 450 m<sup>2</sup>.

### CAPACITIES:

- Theater seating: 138 seats
- Banquet: 72 seats
- Cocktail: 300 guests
- Usable event area on the ground floor: 450 m<sup>2</sup>

The ExperienceQuarter can only be rented exclusively outside the regular operating hours of the SchafbergBahn cog railway (from approximately 5:00 PM).

# QUARTER

## *FACE-TO-FACE ENCOUNTERS WITH MOUNTAIN AND LAKE*

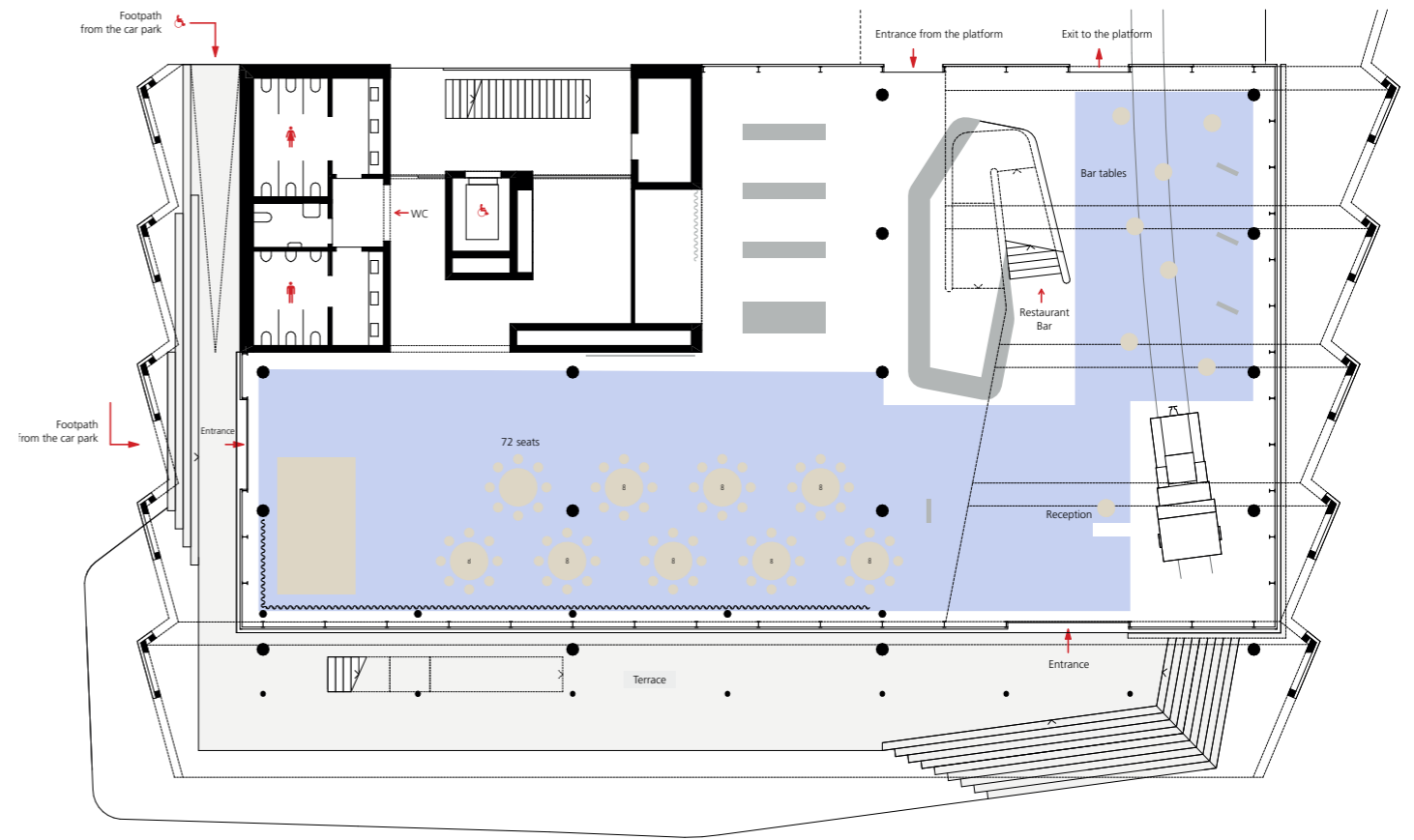
The valley station of the SchafbergBahn in St. Wolfgang has been completely rebuilt. The old station has transformed into a modern ExperienceQuarter, not only home to a museum zone, shop and restaurant, but also an extraordinary events location accompanied by spectacular views of the mountains and lake.

# EXPERI ENCE

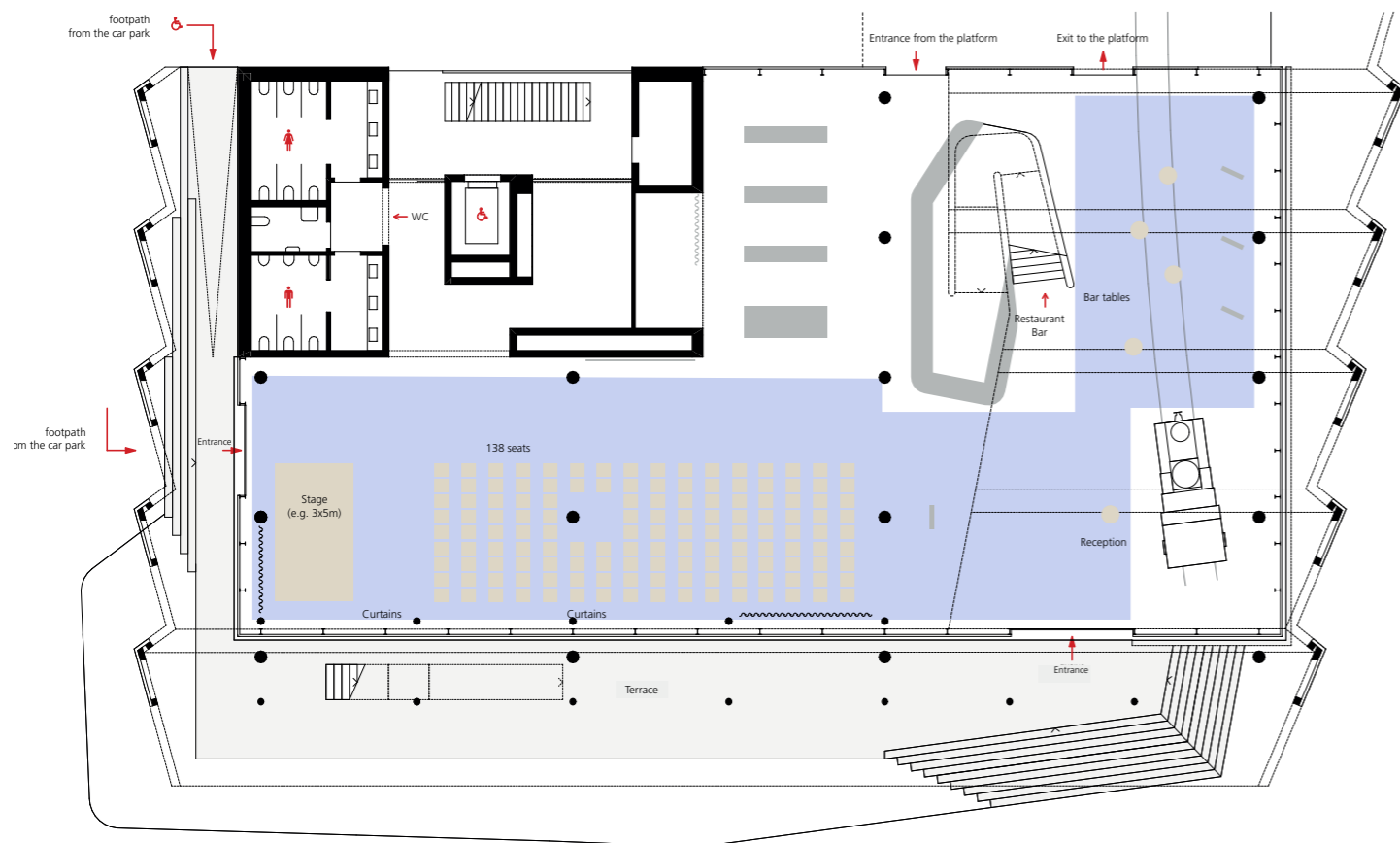
## EVENT AREA ON THE GROUND FLOOR

The ground floor of the ExperienceQuarter is the site of the station concourse with ticket counter, a shop, and a museum zone celebrating the 150-year history of WolfgangseeSchiffahrt and the SchafbergBahn. Outside of the cog railway's regular operating hours, the ground floor can also be used as an area for special events.

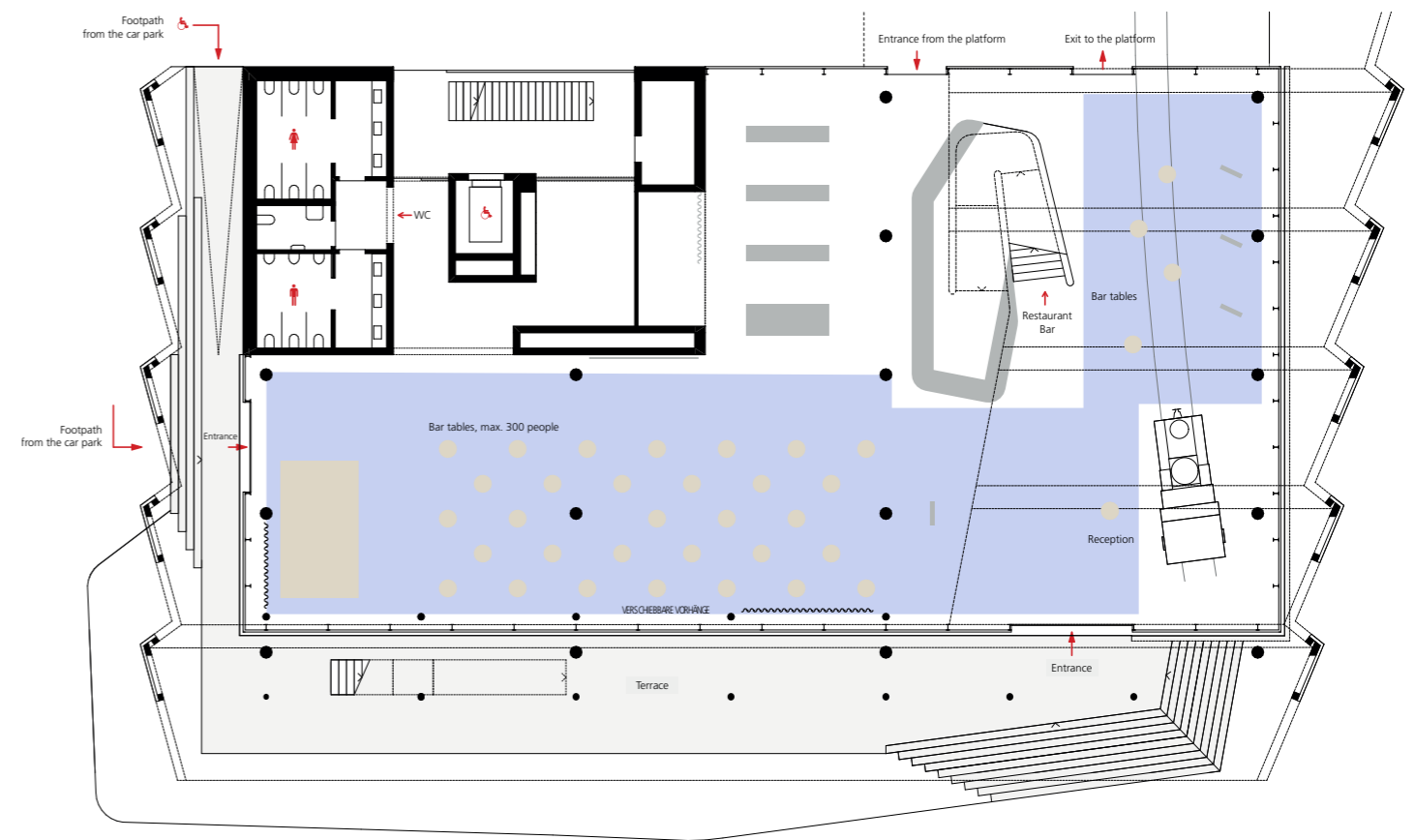
# QUARTER



Ground floor event area: Banquet seating: max. 72 people, usable area ca. 450m<sup>2</sup>



Ground floor event area: Theater seating: max. 138 people, usable area ca. 450m<sup>2</sup>



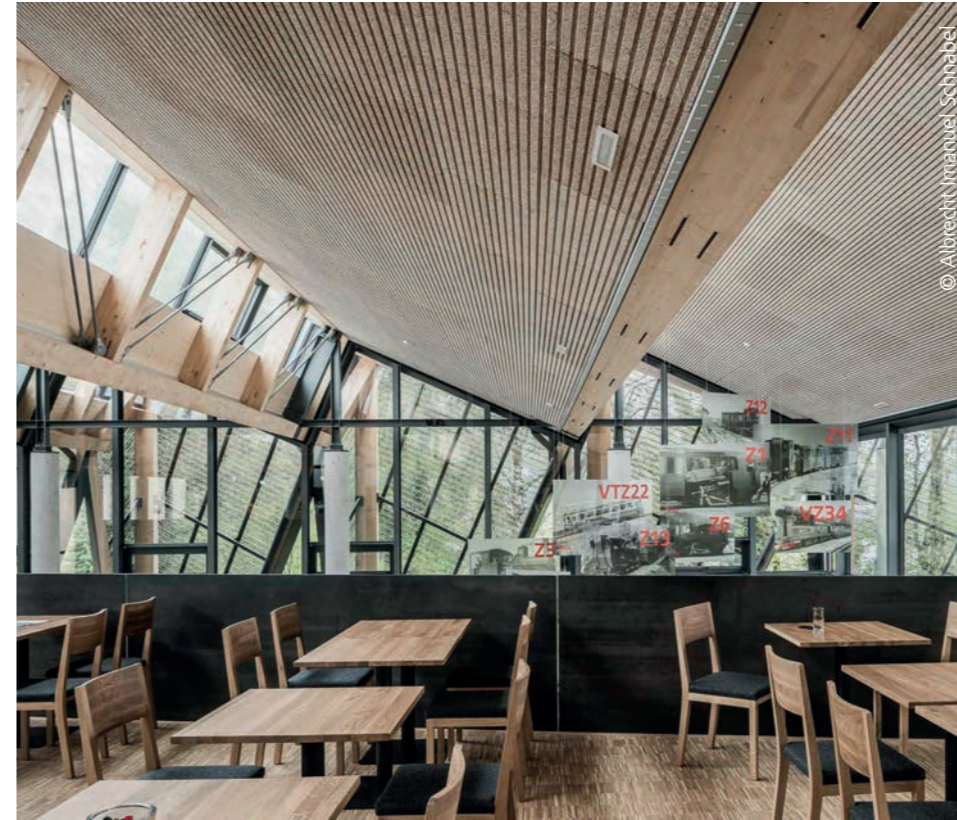
Ground floor event area: Standing reception: max. 300 people, usable area ca. 450m<sup>2</sup>

# EXPERI ENCE

## EVENT AREA ON THE UPPER FLOOR

On the upper floor of the ExperienceQuarter, you'll find the restaurant, complete with a covered lakeside terrace. The restaurant is open to the ground floor, allowing you to observe the bustling activity of the valley station during the day. Events can also be held here during regular operating hours. Naturally, both the ground and upper floors may also be used in combination.

# QUARTER



## RESTAURANT ON THE UPPER FLOOR WITH LAKESIDE TERRACE

FOR UP TO 165 GUESTS

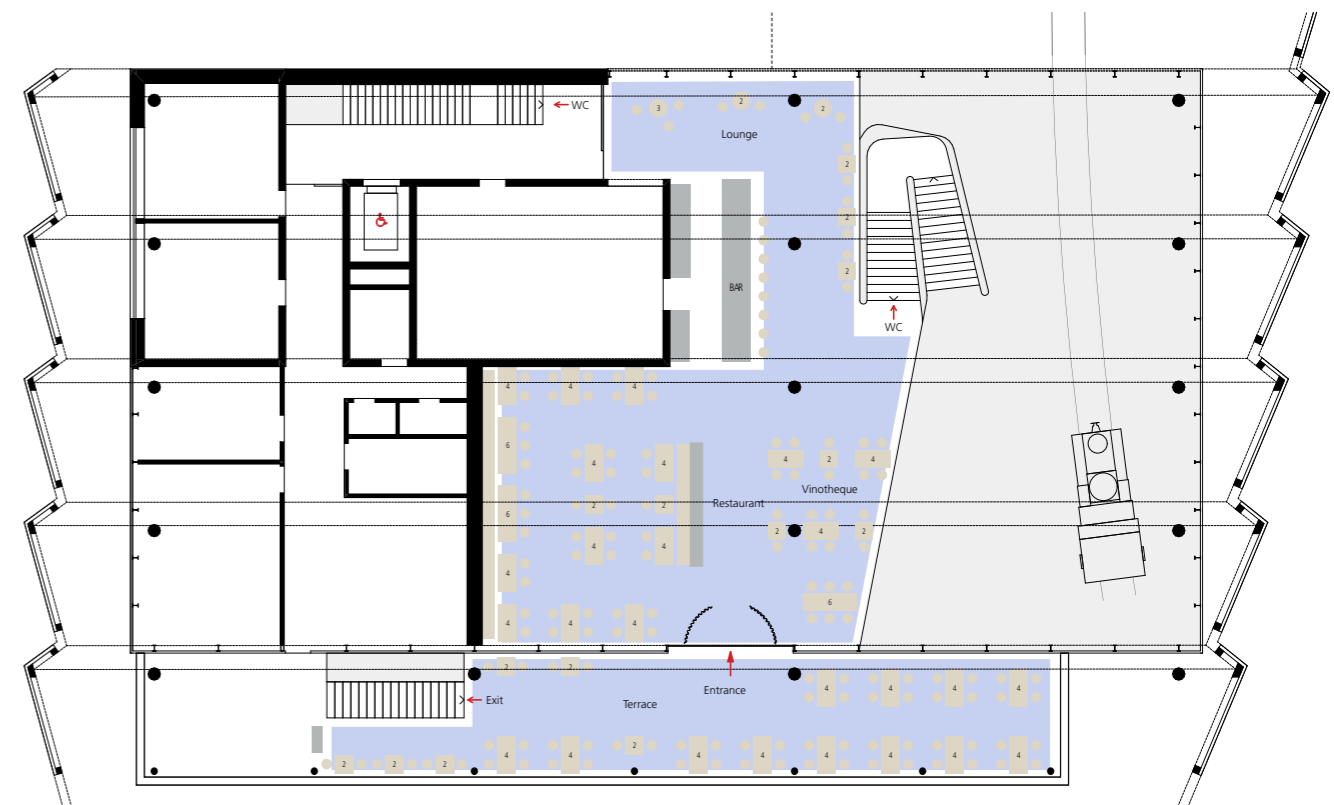
In the restaurant of the newly constructed ExperienceQuarter, enjoy breathtaking views of Lake Wolfgangsee and the Schafberg. Look forward to what is arguably the most beautiful lakeside terrace on the shores of Wolfgangsee!

### CAPACITIES:

- Restaurant: 84 seats
- Bar: 8 seats
- Lounge: 13 seats
- Terrace (covered): 60 seats

### AREAS:

- Restaurant: 225 m<sup>2</sup>
- Lakeside terrace: 114 m<sup>2</sup>



Upper floor event area: Restaurant: 84 seats, Terrace: 60 seats, Bar: 8 seats, Lounge: 13 seats,  
Usable indoor area: ca. 225m<sup>2</sup>, Useable outdoor area: ca. 114m<sup>2</sup>

# MOUNTAIN

SCHAFBERGBAHN & HIMMELSPFORTE:  
*MAKING EVERY EVENT  
A HIGHLIGHT*

# HIGH



# MOUNTAIN TRAIN

## SCHAFBERGBAHN & HIMMELSPFORTE: *MAKING EVERY EVENT A HIGHLIGHT*

A ride on Austria's steepest cog railway takes a good 35 minutes to reach just below the 1,783-meter-high summit. Once at the top, you disembark at the Panorama Station and enjoy not only a unique view of the surrounding lakes and peaks but also interactive insights into the history and technology of the cog railway itself.

From the Panorama Station, a path leads to the Himmelspforte. The cabin almost seems to hover above the craggy, precipitous void below.

**One thing is clear: up here, you're definitely quite a bit closer to the heavens above!**

# HIGH



### *YOU CAN...*

Charter the SchafbergBahn cog railway exclusively – for up to 100 people per train.

By arrangement, the journey can also be made with one of our historic steam locomotives.



### *YOU CAN...*

Rent out the Himmelspforte exclusively – for up to 60 people (from 4 PM, after the regular operating hours of the SchafbergBahn).

The Himmelspforte boasts a panoramic terrace along with a wind- and weatherproof dining room.



# CRUISING THE

As you approach Wolfgangsee from the direction of Salzburg, looking down on St. Gilgen, you are immediately greeted by the deep-blue shimmering waters of the lake. And in the midst of that magical lake: the ferries of Wolfgangsee-Schiffahrt! During the summer months, these ships crisscross between the idyllic lakeshore communities on a regular schedule. As they have done ever since 1873! But also during Advent season, on and around Christmas as well as New Year's, passengers can enjoy the winter landscapes from out on the water.

# LAKE



# YOU CAN CHARTER EXCLUSIVELY ONE OF THESE 5 SHIPS OPERATED BY WOLFGANGSEE- SCHIFFFAHRT

Together, we will find the perfect ship for your special event!



	MS Salzburg	MS Österreich	MS Wolfgang Amadeus	MS Salzkammergut	RMS Kaiser Franz Josef
<b>Special features</b>	Onboard restaurant	Biggest ship in the fleet	Big sundeck	Big, partially covered sundeck	Pure nostalgia on a paddle steamer built in 1873
<b>Capacity</b>	299	365	200	300	100
<b>Inside seating</b>	180	120	60	70	0
<b>Spaces</b>	– Salon – Heated, covered lounge on the top deck	– Salon – Heated, covered lounge on the top deck	– Salon – Bar	– Salon – Bar	– Open deck with sun sail
<b>Catering &amp; Refreshments</b>	– Bar – Onboard restaurant	– Bar – Catering possible	– Bar – Catering possible	– Bar – Catering possible	– Catering possible
<b>Technology</b>	– Sound system – Speaker system with microphone – Heating	– Sound system – Speaker system with microphone – Heating	– Sound system – Wireless microphone – Heating	– Wireless microphone – Heating	

## The Boat Landings

Thanks to the WolfgangseeSchiffahrt ferries, the charming locations surrounding Lake Wolfgangsee are brought within easy reach: St. Wolfgang, with its iconic „White Horse Inn“ and the SchafbergBahn cog railway; St. Gilgen, home to the birthplace of Mozart’s mother; and Strobl, with its beautiful promenade.

Our seven boat landings around Wolfgangsee allow you to board and debark however you please. You determine the direction.

We are happy to advise you regarding precise departure and arrival times. Keep in mind that scheduling must take into account sailing times of our regular ferry service.



# ENJOY MENT

## OUR CULINARY TEAM CAN *ALWAYS BE COUNTED ON!*

Whether hearty snacks enjoyed up at the Himmelspforte, cakes and coffee during a relaxing boat ride, or finger foods and multi-course dinners that promise a splendid night on Lake Wolfgangsee – we match the culinary highlights perfectly to every event. We prioritize regional, seasonal products whilst catering to your personal preferences and special requests.

**We would be happy to send you our menu and beverage suggestions.**

# AHOY!



# THE MAGIC

Our ships also run during Advent weekends and around the Christmas season. They connect the towns of St. Gilgen, St. Wolfgang, and Strobl, where you can explore the idyllic Christmas markets.

The SchafbergBahn cog railway takes you through a winter wonderland up to the Schafbergalm, where you can listen to Christmas carols and warm your hands around a mug of hot punch. With such festive anticipation, your celebration at the ExperienceQuarter is sure to be a complete success!

**Ask us about our offers for your Christmas party on Wolfgangsee.**

# ADVENT





## **OUR GOAL?** *UNIQUE MOMENTS OF PURE JOY IN EVERY WAY!*

No two events are the same! But for us, it's always about 100% commitment and service. Our experienced events team will guide you through every aspect of planning and staging your event, ensuring everything goes smoothly thanks to professional competence and quality service.

We're happy to provide personal consultation at your location. We're also available to assist with the program, decorations, event technology, and music, drawing on our network of longstanding, trusted partners.



Salzburg AG Tourismus GmbH  
Markt 35  
5360 St. Wolfgang  
Austria

+43 662 8884 9700  
info@5schaetze.at

[5treasures.com](https://www.5treasures.com)

 **SALZBURG<sup>AG</sup>**  
TOURISMUS